

**MIGATRONIC**

THREE-PHASE TIG WELDING

# CenTIG 300 DC

300 A at 60% Duty Cycle.  
Portable Precision.

Advanced technology.  
Easy welding.



**300 A**  
MAX CURRENT

**270 A**  
100% DUTY CYCLE

**93%**  
EFFICIENCY

**3-300 A**  
CURRENT RANGE

**12 kg**  
WEIGHT

WHY CENTIG 300 DC

# Built to perform. Designed to move.



100%  
Duty Cycle

## MARKET-LEADING DUTY CYCLE

Rated at 270 A at 100% duty cycle and 300 A at 60%/40°C, the CenTIG 300 DC lets you weld continuously without interruption - ideal for demanding production environments.



Lightest

## LIGHTEST IN CLASS

At just 12 kg, The CenTIG 300 DC is the lightest three-phase 300 A DC TIG machine on the market. Engineered for welders who need serious power that doesn't weigh them down.



3-300 A

## WIDE CURRENT RANGE

From delicate 3 A root passes on thin materials to heavy 300 A production welds - one machine covers every task on the job.



CenCOOL

## PLUG-AND-PLAY WATER COOLING

The CenCOOL water module connects instantly. Upgrade from air-cooled to water-cooled, bringing unlimited production power wherever you need it.



One Dial

## INTUITIVE INTERFACE

A proven circular UI. All key welding parameters accessible in one turn of the dial - no manual needed. Simple enough for occasional welders, powerful enough for experts.



93%

## 93% EFFICIENCY

Market-leading 90% efficiency means less energy wasted as heat, lower operating costs, and a smaller carbon footprint - without compromising welding performance.

**Advanced technology.  
Easy welding.**

# Three Phase Power.

Serious power doesn't have to be heavy.

**300 A**  
MAX CURRENT

**270 A**  
100% DUTY CYCLE

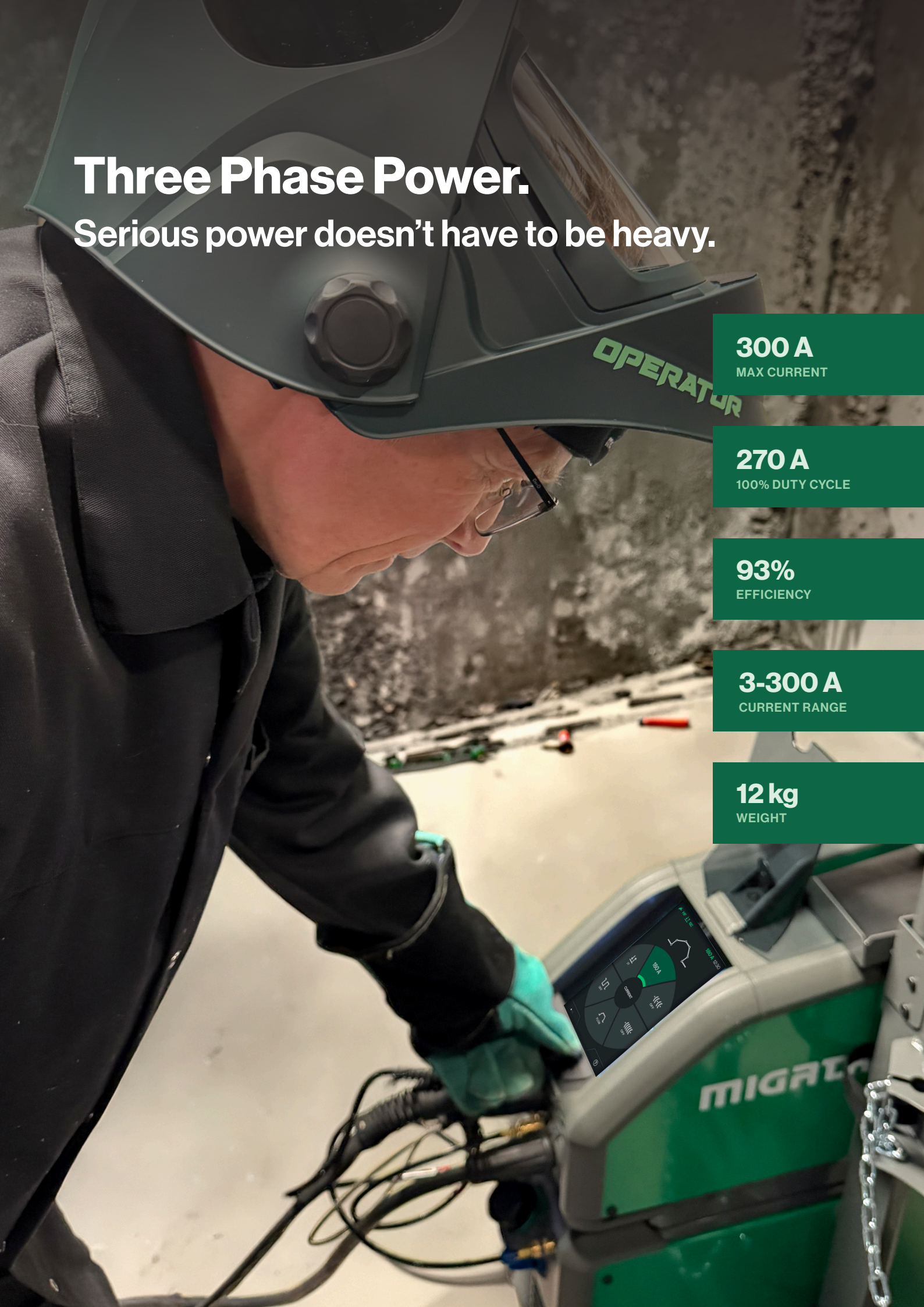
**93%**  
EFFICIENCY

**3-300 A**  
CURRENT RANGE

**12 kg**  
WEIGHT

OPERATOR

MIGATO



## WATER COOLING

# CenCOOL.

**Plug-and-play. Always ready.**

**Same footprint** - The compact cabinet from CenTIG 200 is retained, keeping the combined stack small enough for workshops and vans.

**Proven and updated** - The CenCOOL 1300 from CenTIG 200 — upgraded with a 400 V pump to match the three-phase power of the CenTIG 300 DC.

**Quick to attach** - The water module converts the CenTIG 300 DC into a full production unit only with a few screws.

**Two-wheel trolley** - the same ergonomic trolley from CenTIG 200 is reused, making the water-cooled setup easy to manoeuvre anywhere.

**Air or water** - choose your configuration at point of purchase, or upgrade in the field. Both options share the same platform.



**50+ years  
of welding expertise**

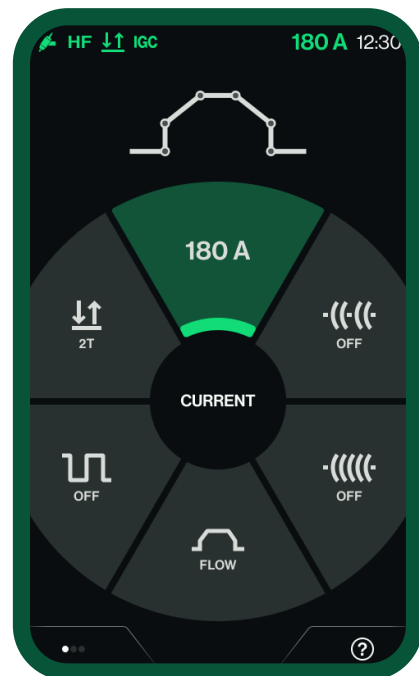
## INTERFACE

# One dial.

**Total Control.**

### DIGITAL INTERFACE

Same intuitive interface as CenTIG 200. Every parameter you need: Current, Pulse, 2T/4T, TIG-A-TACK, TIG-REP-TACK. - All visible at a glance.



### INTERFACE FEATURES

- ✓ Crystal-clear LED display
- ✓ Single-dial navigation
- ✓ Two soft keys
- ✓ Active functions visible in the top statusbar
- ✓ With a long press you can easily activate/deactivate functions
- ✓ Job memory for repeat welds

## SOFTWARE

# Advanced technology. Easy welding.

### Six features that make the difference.



#### **PULSE WELDING**

Less heat. Less distortion. Better results on thin stainless.



#### **CONSISTENTLY STABLE HF**

Equipped with electronically controlled HF, ensuring consistently uniform and stable high-frequency ignition every time.



#### **TACK WELD MODE**

Set the time, trigger the torch - every tack is identical. No guesswork, no variation. Faster setup, consistent results across the job.



#### **JOB MEMORY**

Save your settings and recall them instantly. Switch between materials and applications without re-dialling every parameter from scratch.



#### **GAS FLOW MONITORING (IGC)**

Spot gas coverage problems in real time before they become rejects.



#### **BUILT FOR GENERATOR POWER**

Handles power fluctuations without missing a beat, keeping your weld consistent in any industrial environment.



**Simple  
to use.  
Hard  
to beat.**



## PERFORMANCE OVERVIEW

# Numbers that matter.

**DUTY CYCLE 100%** **270 A**



Market-leading. Above class average of 220 A.

**PEAK OUTPUT** **300 A**



Full 300 A - 60%/40°C for production tasks.

**EFFICIENCY** **93%**

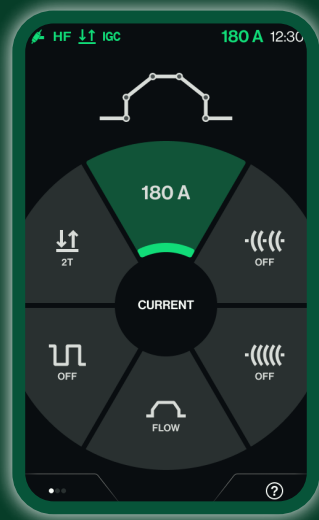


Industry-leading energy conversion.

**CURRENT RANGE** **3-300 A**



Wider range than previous models.



Developed and manufactured  
in Denmark.

## TECHNICAL SPECIFICATIONS

### POWER & PERFORMANCE

Current range TIG **3-300 A**

Current range MMA **15-300 A**

Duty cycle 60%/40°C, TIG **300 A**

Duty cycle 100%/40°C, TIG **270 A**

Efficiency **93%**

### ELECTRICAL

Mains voltage **3x400 V (+/- 15%)**

Frequency **50/60 Hz**

### DIMENSIONS

Air-cooled **602 x 210 x 360 mm**

Water-cooled **1087 x 670 x 602 mm**

### STANDARDS

Type test **IEC 60974**

Process **TIG DC / MMA**

Arc start **HF / Lift TIG**

Protection Class **IP23S**

WHERE IT WORKS

# Built for the industries that demand perfection.



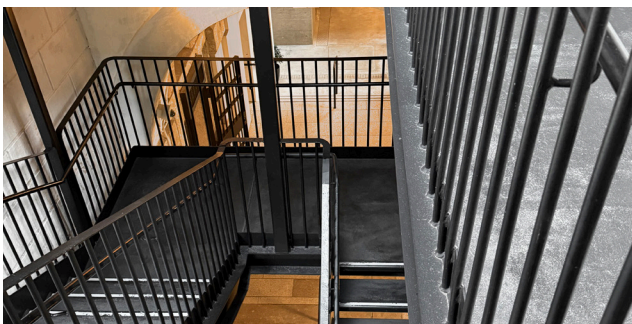
## PHARMA & FOOD PRODUCTION

Clean, spatter-free welds on stainless steel tubes, pipes, and containers are non-negotiable in pharmaceutical and food environments. CenTIG 300 DC delivers the precision and arc stability required for hygienic-grade welds that meet the strictest quality standards.



## PETROCHEMICAL

Fabrication of high-pressure stainless pipes, boilers, and containment vessels demands zero defects. The CenTIG 300 DC provides stable arc performance and full 300 A power to handle thick-wall stainless materials with confidence.



## BUILDING & CONSTRUCTION

Structural frameworks, balcony brackets, staircases, and architectural metalwork require both quality and mobility. The compact, lightweight CenTIG 300 DC fits in a service van and performs on-site — from workshop fabrication to final installation.



## OFFSHORE & PIPING

TIG is the process of choice for single-sided root passes in critical piping. The 3–300 A range covers both the ultra-thin root passes and the full weld - all in one machine.

If you're not going to  
be the cheapest, you  
need to be the **best.**

MIGATRONIC

**Migatronic A/S**  
Aggersundvej 33  
9690 Fjerritslev  
Denmark

Tel: (+45) 96 500 600  
sales@migatronic.dk

EXPLORE AT [MIGATRONIC.COM](https://www.migatronic.com) →

**MIGATRONIC**