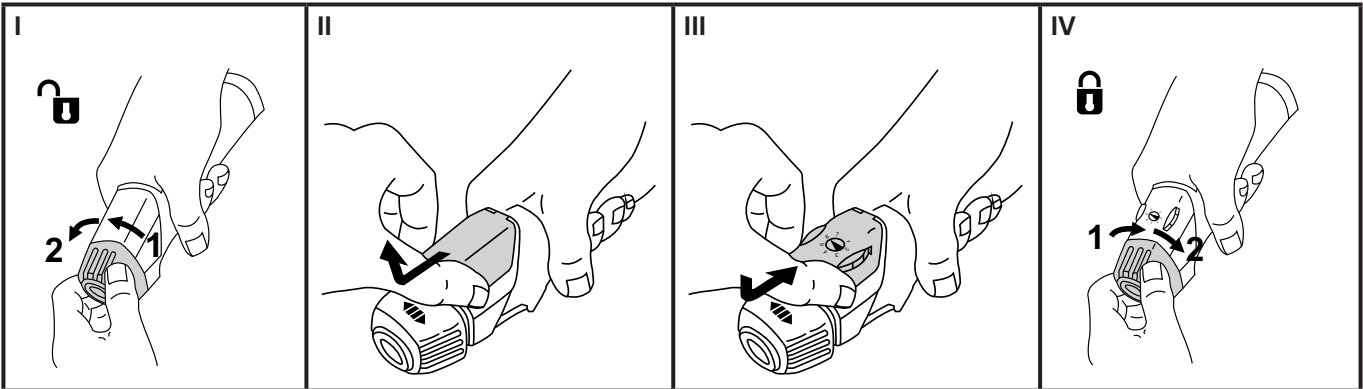


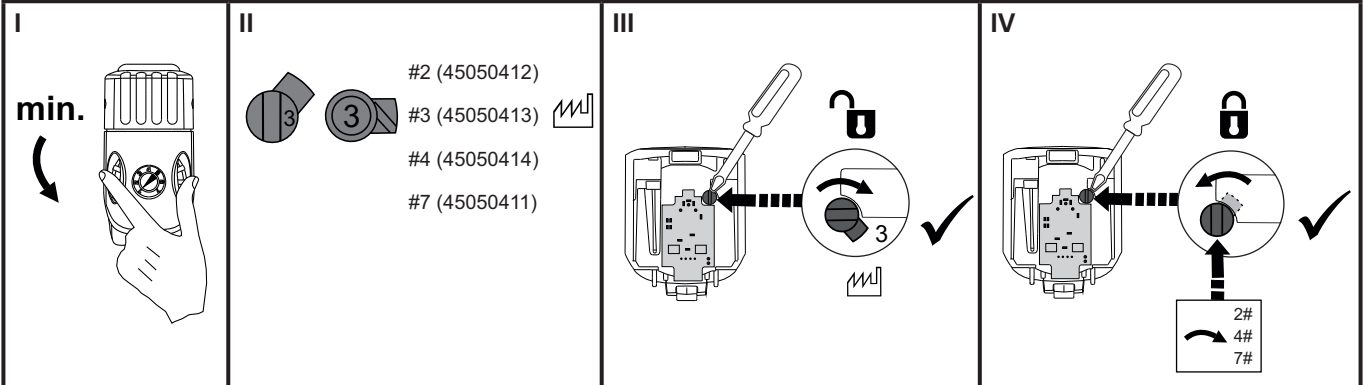


# MIG-A TWIST® sequence module (80100403)

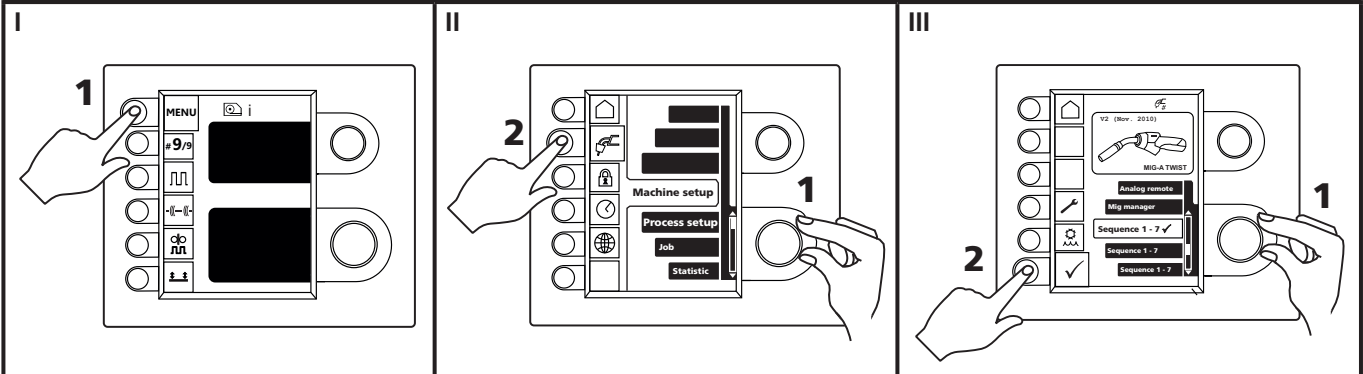
## SIGMA GALAXY / FLEX<sup>2</sup> / SIGMA<sup>2</sup>



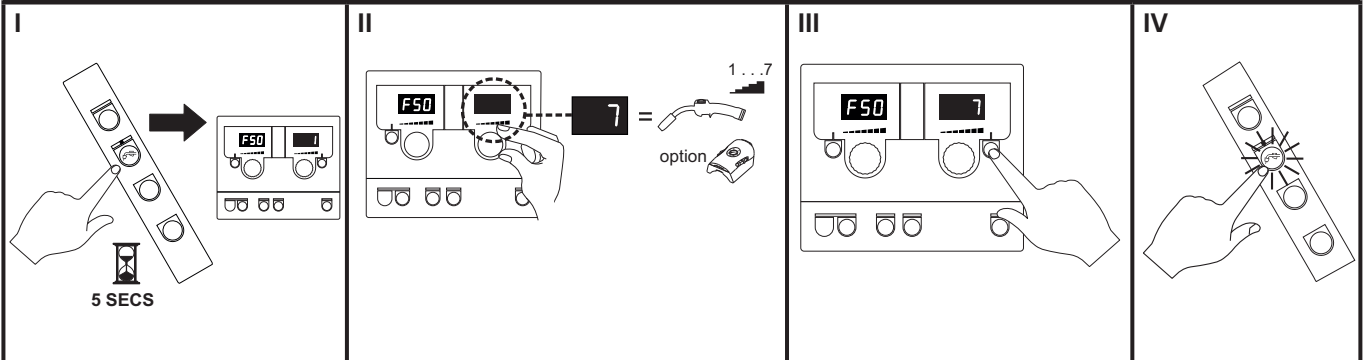
### Change of sequence stop



### SIGMA GALAXY / FLEX<sup>2</sup>



### SIGMA<sup>2</sup>



Please read your quickguide. For more information: [www.migatronic.com](http://www.migatronic.com)