

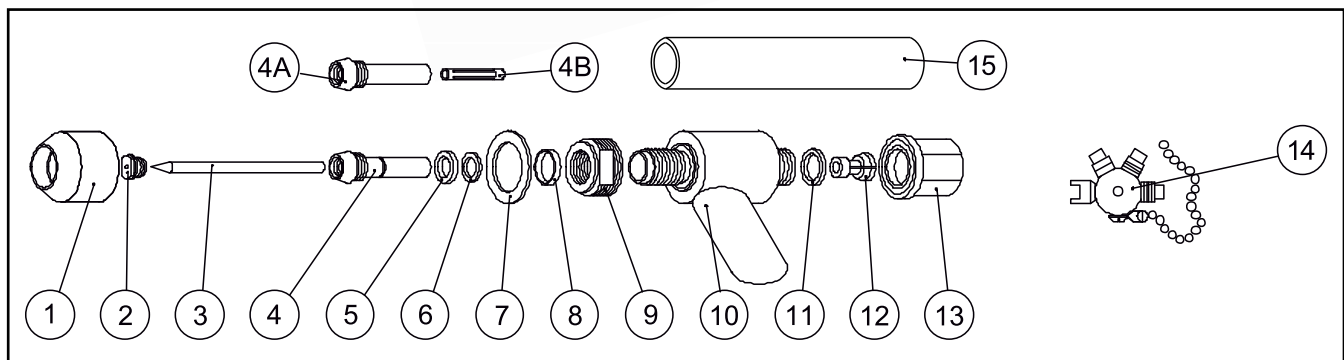


# Wear parts for Plasma Welding Torches

PWM 4A1 180° complete without welding hose Art.no. 84022578



## Wear parts for PWM-4A1



Position no.	Art. no.	PWM-4A
1	84084064	Ceramic nozzle std. f/4A
2	84091847	Nozzle std. 1.58 100A f/4A
	84091848	Nozzle std. 2.37 180A f/4A
	84091849	Nozzle std. 3.18 220A f/4A
	84091889	Weld.tip 40A long
	84091890	Weld.tip 90A long
	84091891	Weld.tip 150A long
	84091892	Weld.tip 190A long
3	84091827	Electrode std. f/PWM-4A & 300
	84091834	Electrode long f/4A
4	84084012	Gas guidance & distributor 4A
4A	84084011	Gas guide f/4A
4B	84092204	Gas distributor white f/PWM-4A
5	84080560	O-ring f/4A (red)
6	84080528	O-ring f/4A & 6A
7	84084069	Washer f/ceramic nozzle 4A
8	84084024	Collar f/4A
9	84084040	Gas lens f/4A
10	84084014	Torch body PWH-4A 70°
	84084054	Torch body PWM-4A1
11	84080530	O-ring f/4A
12	84091876	Electrode tong f/PWM-4A
13	84084158	Electrode cap f/4A
	84091877	Back cup PWM-4A long
14	84091873	Adjusting device f/4A & 6A
15	84091901	Relief tube

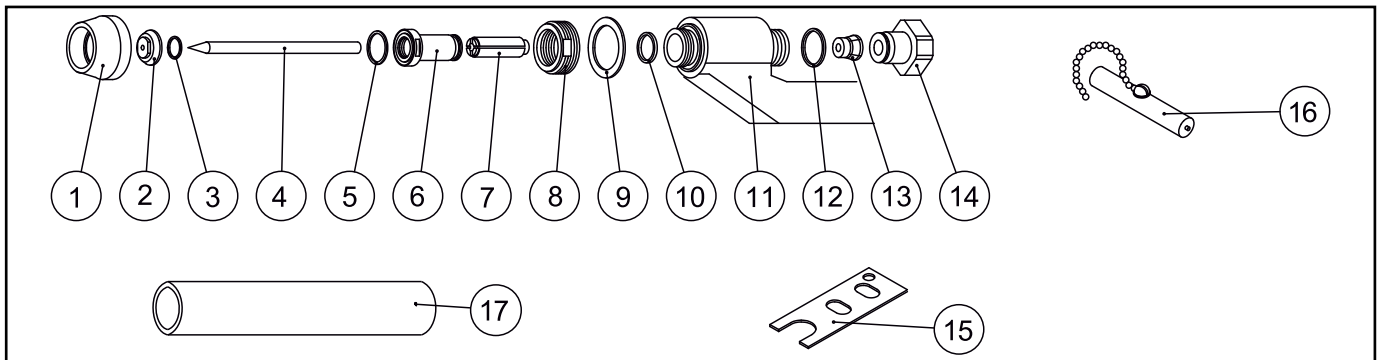


# Wear parts for Plasma Welding Torches

PWM 300 180° complete without welding hose Art.no. 84022847



## Wear parts for PWM-300



Position no.	Art. no.	PWM-300
1	84086542	Ceramic nozzle f/PWM-300 & 6A
2	84086575	Nozzle 2.36 200A f/300
	84086582	Nozzle 2.87 250A f/300
	84086572	Nozzle 3.18 300A f/300
	84084370	Nozzle 200AMP-LG PWM-300
	84084371	Nozzle 250AMP-LG PWM-300
	84084372	Nozzle 300 AMP-LG PWM-300
3	84092863	O-ring PWM-6A
4	84091827	Electrode std. f/PWM-4A & 300
5	84092956	O-ring PWM-6A
6	84086509	Gas guide f/6A & 300
7	84086651	Gas distributor white f/300
8	84086541	Adaptor f/ceramic nozzle 6A
9	84086512	Washer f/6A
10	84080531	O-ring 25 x 015 f/6A
11	84086649	Torch body PWM-300
12	84083487	O-ring f/6A & PWM-300
13	84086650	Elektrode tong f/PWM-300
14	84086654	Electrode cap f/300
15	84086517	Key f/nozzle PWM-300
16	84086653	Adjusting device f/PWM-300
17	84091901	Relief tube

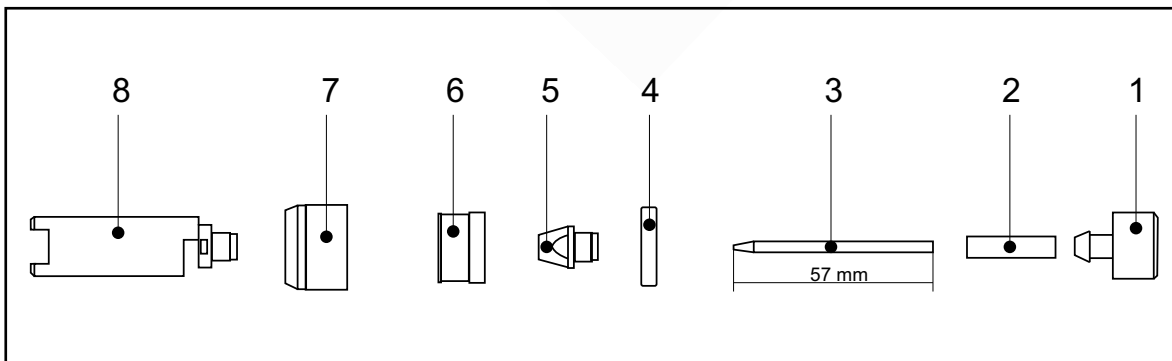


# Wear parts for Plasma Welding Torches

Plasma-TIG PBI PLAS 100W 4m,complete Art.no. 80601000



## Wear parts for PLASMA 100W



Position no.	Art. no.	PWM-300
1	80601006	Torch cap 400W 1.6mm
	80601007	Torch cap 100W 2.4mm
2	80601014	Center ring 100W 1.6mm
	80601015	Center ring 100W 2.4mm
3	80601010	Wolfram electrode 58mm 1.6mm
	80601011	Wolfram electrode 58mm 2.4mm
4	80601016	Insulating ring
5	80601018	Tip $\varnothing$ 1.2mm
	80601019	Tip $\varnothing$ 1.7mm
	80601021	Tip $\varnothing$ 2.6mm
6	80601022	Gas diffuser
7	80601023	Gas nozzle
8	80601024	Tool

