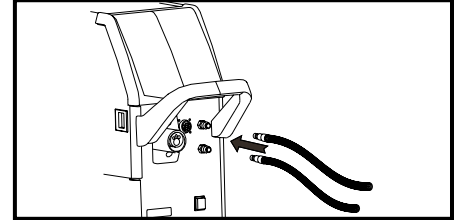
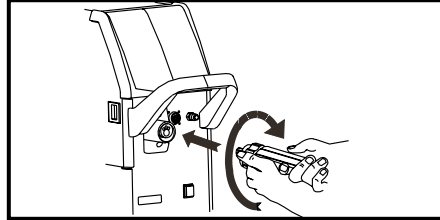
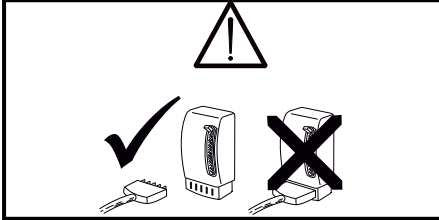


MIGAIR ML 240 / MV 400 FKS

Tilslutning / Connection / Anschluss



MIGAIR ML 240 (Air)

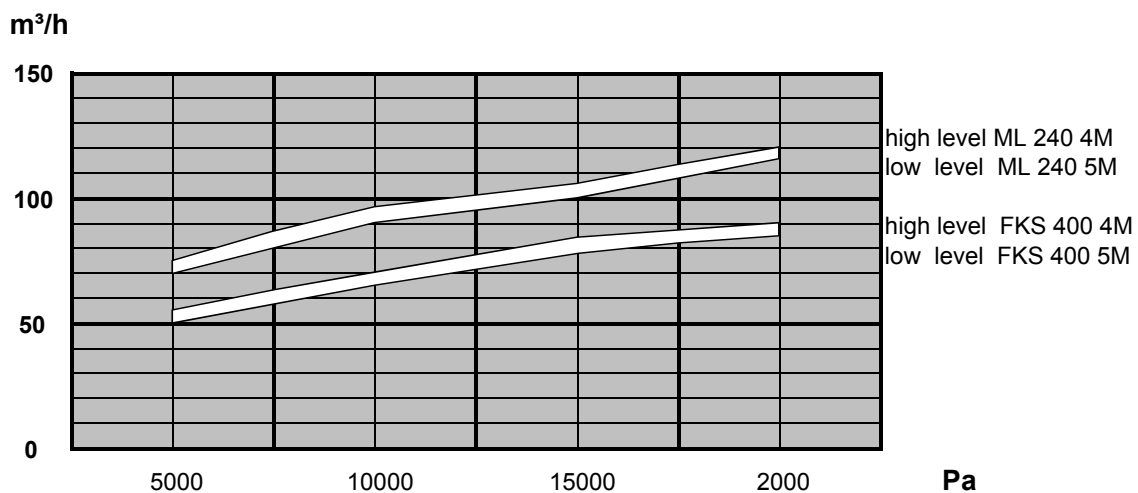
Art.no.
80193310 - 4m
80193311 - 5m

MIGAIR MV 400 FKS (Water)

Art.no.
80293017 - 4m
80293018 - 5m



MIGATRONIC MIGAIR ML 240 -MV 400FKS MIG/MAG WELDING HOSES WITH FUME EXTRACTION



The vacuum of the suction must be between 5000 - 20000 Pa.

Depending on the vacuum diagram showing the respective pressure and air-flow of Extraction Torches

convert: 1 mmH₂O = 9,80665 Pascal.

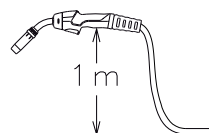


MIGAIR - ML 240 / MV 400 FKS

Ret til ændringer forbeholdes

Model:	ML240 MIG AIR	MV400FKS MIG AIR
35% belastning - Co ₂	250 A	-
35% belastning - Mixgas	220 A	-
100% belastning - Co ₂	-	400 A
100% belastning - Mixgas	-	350 A
Køling	luft	vand
Min. flowrate, vandkøling 1 bar	-	1 l/min.
Maks. tryk (vand)	-	5 bar
Maks. vandtemperatur	-	70° C
Gas flow ±5%	10-20 l/min.	10-20 l/min.
Tråddiameter	0,8-1,2 mm	0,8-1,6 mm
Kabel	25 mm ²	16 mm ²
Vægt*	1,6 kg	1,6 kg
Totalvægt, 4m/5m	4,0 kg/4,5 kg	4,7 kg/5,2 kg
Tilslutning	ZA	ZA
Norm	EN/IEC60974-7	EN/IEC60974-7

* vægt





Tekniske data

- 1 x 230 V
- Støjniveau: 73 dB (A)
- Højvakuumfilter i støvklasse M
- 1200 Watt
- ø50 mm tilslutning
- Vægt: 18,7 kg
- Mål LxBxH: 370x350x534 mm
- Lufttryk: 24500PA/0,245 bar
- Luftmængde/time: 209 m³/h



Udsugningsslange
Flex sugeslange til MigAir og mundstykke i løbende meter
Art.nr. 92570041

EU-OVERENSSTEMMELSESERKLÆRING

CE

MIGATRONIC A/S
Aggersundvej 33
9690 Fjerritslev
Danmark

erklærer, at nedennævnte svejseslanger
Type: MIGAIR

er i overensstemmelse med bestemmelserne
i direktiverne 2014/35/EU
2011/65/EU

Europæisk standard: EN/IEC60974-7

Udfærdiget i Fjerritslev 17.05.2017


Niels Jørn Jakobsen
CEO



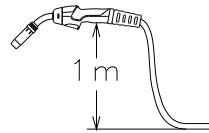
Bortskaf produktet i overensstemmelse med gældende regler og forskrifter.
www.migatronik.com/goto/weee

MIGAIR - ML 240 / MV 400 FKS

We reserve the right to make changes

Model:	ML240 MIG AIR	MV400FKS MIG AIR
35% duty cycle - Co ₂	250 A	-
35% duty cycle - Mixgas	220 A	-
100% duty cycle - Co ₂	-	400 A
100% duty cycle - Mixgas	-	350 A
Cooling	luft	vand
Min. flowrate, watercooling 1 bar	-	1 l/min.
Max. pressure (water)	-	5 bar
Max. water temperature	-	70° C
Gas flow ±5%	10-20 l/min.	10-20 l/min.
Wire diameter	0,8-1,2 mm	0,8-1,6 mm
Cable	25 mm ²	16 mm ²
Weight*	1,6 kg	1,6 kg
Total weight, 4m/5m	4.0 kg/ 4.5 kg	4.7 kg/5.2 kg
Connection	ZA	ZA
Standard	EN/IEC60974-7	EN/IEC60974-7


* weight





Technical data

- 1 x 230 V
- Noise level: 73 dB (A)
- High-vacuum dust class M filter
- 1200 Watt
- ø50 mm connection
- Weight: 18.7 kg
- Dimensions (LxWxH): 370x350x534 mm
- Air pressure: 24500PA/0,245 bar
- Air flow/hour: 209 m³/h



Extraction hose
Flex extraction hose for MigAir and mouthpiece in running metre. Inside diameter Art.no. 92570041

EC DECLARATION OF CONFORMITY

MIGATRONIC A/S
Aggersundvej 33
9690 Fjerritslev
Denmark

hereby declare that our welding hoses as stated below


Type: MIGAIR

conforms to directives 2014/35/EU
 2011/65/EU

European Standards: EN/IEC60974-7

Issued in Fjerritslev 17.05.2017

Niels Jørn Jakobsen
CEO



Dispose of the product according to local standards and regulations.
www.migatronik.com/goto/weee

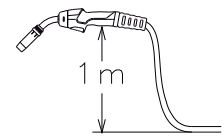


MIGAIR - ML 240 / MV 400 FKS

Technische Änderungen vorbehalten

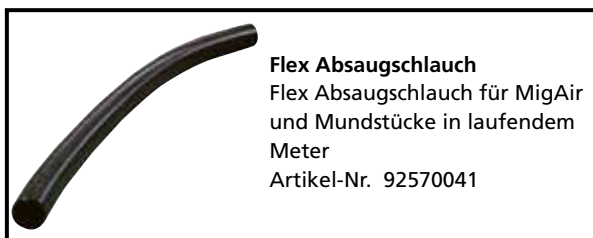
Modell:	ML240 MIG AIR	MV400FKS MIG AIR
35% Einschaltdauer - Co ₂	250 A	-
35% Einschaltdauer - Mischgas	220 A	-
100% Einschaltdauer - Co ₂	-	400 A
100% Einschaltdauer - Mischgas	-	350 A
Kühlung	Luft	Wasser
Min. Durchflussgeschwindigkeit wasserkühlung 1 bar	-	1 l/min.
Max. Druck (Wasser)	-	5 bar
Max. Wassertemperatur	-	70° C
Gasfluss ±5%	10-20 l/min.	10-20 l/min.
Drahtdurchmesser	0,8-1,2 mm	0,8-1,6 mm
Kabel	25 mm ²	16 mm ²
Gewicht*	1,6 kg	1,6 kg
Gesamtgewicht, 4m/5m	4,0 kg/4,5 kg	4,7 kg/5,2 kg
Anschluss	ZA	ZA
Norm	EN/IEC60974-7	EN/IEC60974-7

* Gewicht



Technische Daten

- 1 x 230 V
- Geräuschpegel: 73 dB (A)
- Hochvakuum Filter in Staubklasse M
- 1200 Watt
- ø 50 mm Anschluss
- Gewicht: 18,7 kg
- Maße (LxBxH): 370x350x534 mm
- Luftdruck: 24500PA/0,245 bar
- Luftmenge/Stunde: 209 m³/h



Flex Absaugschlauch
Flex Absaugschlauch für MigAir
und Mundstücke in laufendem
Meter
Artikel-Nr. 92570041



Entsorgen Sie das Produkt gemäß
den örtlichen Standards.
www.migatronic.com/goto/weee