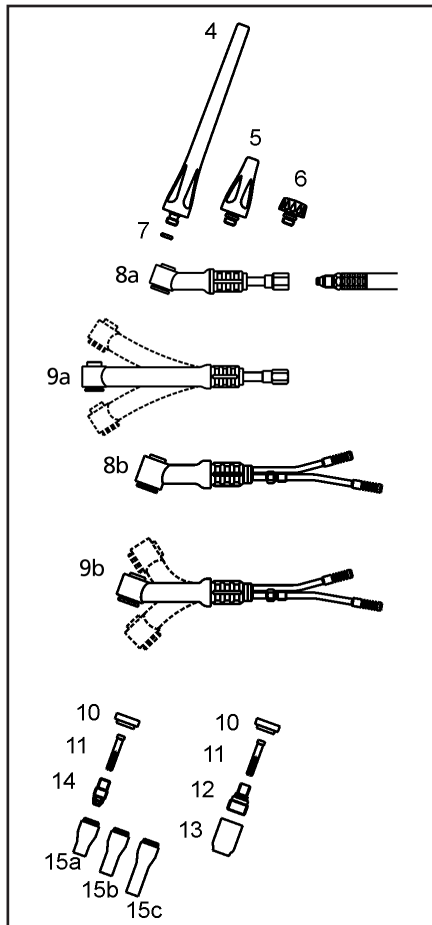




Wear parts for TIG Ergo Welding Torches

Wear parts for TIG Ergo 101/301/321



Position no.	Art. no.	Description	No of pcs.	
4	<input type="checkbox"/> <input type="checkbox"/> Δ	80400117 Electrode clamp long TIG 101-301	1	
5	<input type="checkbox"/> <input type="checkbox"/> Δ	80400116 Electrode clamp MEDIUM TIG 101-301	10	
6	<input type="checkbox"/> <input type="checkbox"/> Δ	80400115 Electrode clamp short TIG 101-301	10	
7	<input type="checkbox"/> <input type="checkbox"/> Δ	80400204 O-Ring Electrode cap TIG100/300	10	
8a		80300194 Torch body TIG 301 55 mm	1	
9a		80300195 Torch body TIG 101F 60 mm	1	
		80300051 Torch body TIG 101 F 100 mm	1	
		80300052 Torch body TIG 101 F 135 mm	1	
8b		80400310 Insulator TIG101/301	1	
9b		80400311 Torch body TIG 301F 55 mm	10	
		80400315 Torch body TIG 301 F 105 mm	10	
		80400316 Torch body TIG 301 F 135 mm	10	
10	<input type="checkbox"/> <input type="checkbox"/> Δ	80300219 Insulator TIG101/301	10	
11	<input type="checkbox"/> <input type="checkbox"/>	80430211 Electrode clamp Ø1.0 mm CuCr	10	
	<input type="checkbox"/> <input type="checkbox"/>	80430212 Electrode clamp Ø1.6 mm CuCr	10	
	<input type="checkbox"/> <input type="checkbox"/> Δ	80430213 Electrode clamp Ø2.4 mm CuCr	10	
	<input type="checkbox"/> Δ	80430214 Electrode clamp Ø3.2 mm CuCr	10	
12		80410210 Gas lens 1,0 mm 101-301 copper/brass	10	
		80410211 Gas lens 1,6 mm 101-301 copper/brass	10	
		80410212 Gas lens 2,4 mm 101-301 copper/brass	10	
		80410213 Gas lens II 3,2 mm 101-301 copper/brass	10	
		80410214 Gas lens II 1,0 mm 101-301 cast brass	10	
		80410215 Gas lens II 1,6 mm 101-301 cast brass	10	
		80410216 Gas lens II 2,4 mm 101-301 cast brass	10	
	80410217 Gas lens II 3,2 mm 101-301 cast brass	10		
13		80440210 Gas Nozzle GAS L TIG101/301 #4	10	
		80440211 Gas Nozzle GAS L TIG101/301 #5	10	
		80440212 Gas Nozzle GAS L TIG101/301 #6	10	
		80440213 Gas Nozzle GAS L TIG101/301 #7	10	
		80440214 Gas Nozzle GAS L TIG101/301 #8	10	
14	<input type="checkbox"/> <input type="checkbox"/>	80410201 Electrode holder Ø1.0 TIG101/301	10	
	<input type="checkbox"/> <input type="checkbox"/> Δ	80410202 Electrode holder Ø1.6 TIG101/301	10	
	<input type="checkbox"/> <input type="checkbox"/> Δ	80410203 Electrode holder Ø2.4 TIG101/301	10	
	<input type="checkbox"/> Δ	80410204 Electrode holder Ø3.2 TIG101/301	10	
15a	<input type="checkbox"/> <input type="checkbox"/> Δ	80440201 Gas Nozzle TIG101/301 #4	10	
	<input type="checkbox"/> <input type="checkbox"/> Δ	80440202 Gas Nozzle TIG101/301 #5	10	
	<input type="checkbox"/> <input type="checkbox"/> <input type="checkbox"/> Δ	80440203 Gas Nozzle TIG101/301 #6	10	
	<input type="checkbox"/> <input type="checkbox"/> Δ	80440204 Gas Nozzle TIG101/301 #7	10	
	<input type="checkbox"/> <input type="checkbox"/> Δ	80440205 Gas Nozzle TIG101/301 #8	10	
15b		80440221 Gas Nozzle long 48 mm #4L	10	
		80440222 Gas Nozzle long 48 mm #5L	10	
		80440223 Gas Nozzle long 48 mm #6L	10	
15c		80440231 Gas Nozzle X-long 64 mm #4XL	10	
		80440232 Gas Nozzle X-long 64 mm #5XL	10	
		80440233 Gas Nozzle X-long 64 mm #6XL	10	
19	<input type="checkbox"/> <input type="checkbox"/>	80361372	Tungsten electrodes. See page 3	10
	<input type="checkbox"/> <input type="checkbox"/> Δ	80361374		10
	<input type="checkbox"/> Δ	80361376		10
	<input type="checkbox"/> *	80300117 Std. wearing part set Ø1.6 TIG 101/301/321	1	
	<input type="checkbox"/> *	80300119 Std. wearing part set Ø2.4 TIG 101/301/321	1	
	<input type="checkbox"/>	81100228 Wearing part box TIG 101/301/321 1.6/2.4	1	
	<input type="checkbox"/> Δ	81100248 Wearing part box TIG 101/301/321 2.4/3.2	1	
	<input type="checkbox"/>	80300140 Wearing part set 1.6 gas TIG 101-301-321	1	
	<input type="checkbox"/>	80300141 Wearing part set 2.4 gas TIG 101-301-321	1	

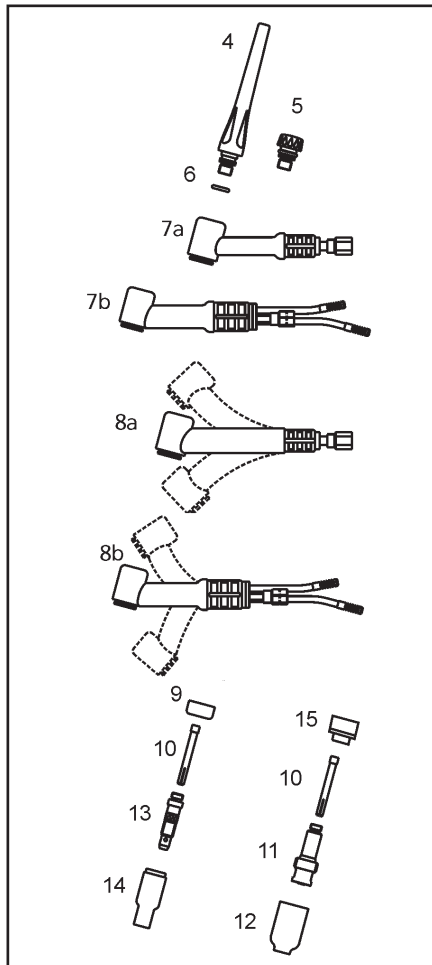
The size of the gas nozzle (inside diameter), e.g. #4 = 4 x 1.6 mm = 6.4 mm.

* Δ = Incl. in wearing part box/set.



Wear parts for TIG Ergo Welding Torches

Wear parts for TIG Ergo 201/221/401



Position no.	Art. no.	Description	No of pcs.
4	<input type="checkbox"/> 80300201	Electrode cap long TIG201-401	10
5	<input type="checkbox"/> 80300200	Electrode cap short TIG 201-401	10
6	<input type="checkbox"/> 80300223	O-Ring for cap TIG201/401	1
7a	80300196	Torch body TIG 201 70 mm	1
	80300237	TIG 221 Torch body	1
7b	80400422	Torch body TIG 401 80 mm	1
8a	80300197	Torch body TIG 201F 70 mm	1
	80300198	Torch body TIG 201F 90 mm	1
	80300238	TIG 221F Torch body	1
8b	80400423	Torch body TIG 401F 80 mm	1
9	<input type="checkbox"/> 80300189	Insulator TIG 201-401	10
10	<input type="checkbox"/> 80330110	Electrode clamp Ø1.0 mm CuCr	10
	<input type="checkbox"/> 80330111	Electrode clamp Ø1.6 mm CuCr	10
	* <input type="checkbox"/> 80330112	Electrode clamp Ø2.4 mm CuCr	10
	<input type="checkbox"/> 80330113	Electrode clamp Ø3.2 mm CuCr	10
	<input type="checkbox"/> 80330114	Electrode clamp Ø4.0 mm CuCr	10
11	80310411	Gas lens 1.0 mm TIG 201-401	10
	80310412	Gas lens 1.6 mm TIG 201-401	10
	80310413	Gas lens 2.4 mm TIG 201-401	10
	80310414	Gas lens 3.2 mm TIG 201-401	10
	80310415	Gas lens 4.0 mm TIG 201-401	10
12	80340400	Nozzle for gas lense TIG 201/221/401/451 #4	10
	80340401	Nozzle for gas lense TIG 201/221/401/451 #5	10
	80340402	Nozzle for gas lense TIG 201/221/401/451 #6	10
	80340403	Nozzle for gas lense TIG 201/221/401/451 #7	10
	80340404	Nozzle for gas lense TIG 201/221/401/451 #8	10
	80340406	Nozzle for gas lense TIG 201/221/401/451 #11	10
13	<input type="checkbox"/> 80310004	Electrode holder Ø1.0 TIG201/401	10
	<input type="checkbox"/> 80310000	Electrode holder Ø1.6 TIG201/401	10
	* <input type="checkbox"/> 80310001	Electrode holder Ø2.4 TIG201/401	10
	<input type="checkbox"/> 80310002	Electrode holder Ø3.2 TIG201/401	10
	<input type="checkbox"/> 80310003	Electrode holder Ø4.0 TIG201/401	10
14	<input type="checkbox"/> 80340001	Gas Nozzle TIG201/401 #4	10
	<input type="checkbox"/> 80340002	Gas Nozzle TIG201/401 #5	10
	* <input type="checkbox"/> 80340003	Gas Nozzle TIG201/401 #6	10
	<input type="checkbox"/> 80340004	Gas Nozzle TIG201/401 #7	10
	<input type="checkbox"/> 80340005	Gas Nozzle TIG201/401 #8	10
	<input type="checkbox"/> 80340006	Gas Nozzle TIG201/401 #10	10
	<input type="checkbox"/> 80340007	Gas Nozzle TIG201/401 #12	10
15	80300220	Gas lens Insulator TIG201-401	10
19	<input type="checkbox"/> 80361372	Tungsten electrodes. See page 3	10
	* <input type="checkbox"/> 80361374		10
	* <input type="checkbox"/> 80300118	Std. wearing part set Ø2.4 TIG 201/221/401	1
	<input type="checkbox"/> 80300274	Std. wearing part set Ø1.6 TIG 201/221/401	1
	<input type="checkbox"/> 81100230	Wearing part box TIG 201/221/401	1
	<input type="checkbox"/> 80300142	Wearing part set 1.6 gas TIG 201-401	1
	<input type="checkbox"/> 80300143	Wearing part set 2.4 gas TIG 201-401	1

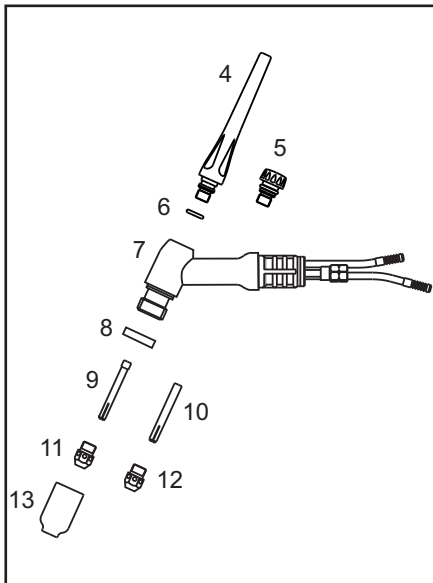
The size of the gas nozzle (inside diameter), e.g. #4 = 4 x 1.6 mm = 6.4 mm.

* Δ = Incl. in wearing part box/set.



Wear parts for TIG Ergo Welding Torches

Wear parts for TIG Ergo 451



Position no.	Art. no.	Description	No of pcs.
4	80300201	Electrode cap long TIG201-401	10
5	80300200	Electrode cap short TIG 201-401	10
6	80300223	O-Ring for cap TIG201/401	1
7	80400425	Torch body TIG 451	1
8	□ Δ 80300239	Insulator TIG 451	10
9	80330110	Electrode clamp Ø1.0 mm CuCr	10
	80330111	Electrode clamp Ø1.6 mm CuCr	10
	80330112	Electrode clamp Ø2.4 mm CuCr	10
	80330113	Electrode clamp Ø3.2 mm CuCr	10
	80330114	Electrode clamp Ø4.0 mm CuCr	10
10	80330106	Collet HD TIG451 4,0 mm	10
	80330107	Collet HD TIG451 4,8 mm	10
11	*Δ 80310010	Collet body TIG451 1,0-3,2 mm	10
12	80310011	Collet body TIG451 3,2-4,8 mm	10
13	80340400	Nozzle for gas lense TIG 201/221/401/451 #4	10
	80340401	Nozzle for gas lense TIG 201/221/401/451 #5	10
	80340402	Nozzle for gas lense TIG 201/221/401/451 #6	10
	80340403	Nozzle for gas lense TIG 201/221/401/451 #7	10
	80340404	Nozzle for gas lense TIG 201/221/401/451 #8	10
	80340406	Nozzle for gas lense TIG 201/221/401/451 #11	10
18	* 80361374	Tungsten electrodes. See page 3	10
	Δ 80361376		10
	* 80300136	Std. wearing part set Ø2.4 TIG 451	1
	Δ 80300138	Std. wearing part set Ø3.2 TIG 451	1

The size of the gas nozzle (inside diameter), e.g. #4 = 4 x 1.6 mm = 6.4 mm.
 * □ Δ = Incl. in wearing part box/set.

Tungsten Electrodes

Art. no.	Description	No of pcs.
80360022	Tungsten electrode WP Ø1.6 green	10
80360024	Tungsten electrode WP Ø2.4 green	10
80360026	Tungsten electrode WP Ø3.2 green	10
80360042	Tungsten electrode WL10 Ø1.6 black	10
80360043	Tungsten electrode WL10 Ø2.4 black	10
80360044	Tungsten electrode WL10 Ø3.2 black	10
80360092	Tungsten electrode WL20 Ø1.6 blue	10
80360094	Tungsten electrode WL20 Ø2.4 blue	10
80360095	Tungsten electrode WL20 Ø3.2 blue	10
80361371	Tungsten electrode WS2 Ø1.0 superblue	10
80361372	Tungsten electrode WS2 Ø1.6 superblue	10
80361373	Tungsten electrode WS2 Ø2.0 superblue	10
80361374	Tungsten electrode WS2 Ø2.4 superblue	10
80361376	Tungsten electrode WS2 Ø3.2 superblue	10
80361377	Tungsten electrode WS2 Ø4.0 superblue	10
80361378	Tungsten electrode WS2 Ø4.8 superblue	10



Wear parts boxes for TIG Ergo 101 - 401

81100228	Wear parts box TIG 101/301/321	
80300219	1 pcs.	Insulator TIG101/301
80361372	10 pcs.	Tungsten electrode WS2 Ø1.6 superblue
80361374	10 pcs.	Tungsten electrode WS2 Ø2.4 superblue
80400115	1 pcs.	Electrode clamp short TIG 101-301
80400116	1 pcs.	Electrode clamp MEDIUM TIG 101-301
80400117	1 pcs.	Electrode clamp long TIG 101-301
80400204	2 pcs.	O-Ring Electrode cap TIG100/300
80410202	2 pcs.	Electrode holder Ø1.6 TIG101/301
80410203	2 pcs.	Electrode holder Ø2.4 TIG101/301
80430212	5 pcs.	Electrode clamp Ø1.6 MM CuCr
80430213	5 pcs.	Electrode clamp Ø2.4 MM CuCr
80440202	5 pcs.	Gas Nozzle TIG101/301 #5
80440203	5 pcs.	Gas Nozzle TIG101/301 #6
80440204	5 pcs.	Gas Nozzle TIG101/301 #7

81100230	Wear parts box TIG 201/221/401	
80300189	2 pcs.	Insulator TIG 201-401
80361372	10 pcs.	Tungsten electrode WS2 Ø1.6 superblue
80361374	10 pcs.	Tungsten electrode WS2 Ø2.4 superblue
80300200	1 pcs.	Electrode cap short TIG 201-401
80300201	1 pcs.	Electrode cap long TIG201-401
80300223	2 pcs.	O-Ring for cap TIG201/401
80310000	2 pcs.	Electrode holder Ø1.6 TIG201/401
80310001	2 pcs.	Electrode holder Ø2.4 TIG201/401
80330111	5 pcs.	Electrode clamp Ø1.6 MM CuCr
80330112	5 pcs.	Electrode clamp Ø2.4 MM CuCr
80340002	5 pcs.	Gas Nozzle TIG201/401 #5
80340003	5 pcs.	Gas Nozzle TIG201/401 #6
80340004	5 pcs.	Gas Nozzle TIG201/401 #7