

## AUTOMIG 300 PULSE



# AUTOMIG 300 PULSE

## FOR WELDERS IN THE AUTO BUSINESS

The Automig 300 Pulse is the welding machine for repairing cars and building up car bodies in professional workshops. It is designed to meet carmakers' standards for joining processes in thin high-tensile steel, aluminium and stainless steel.



## ADVANCED, NOT COMPLICATED - SIMPLE AND VISUAL DISPLAY

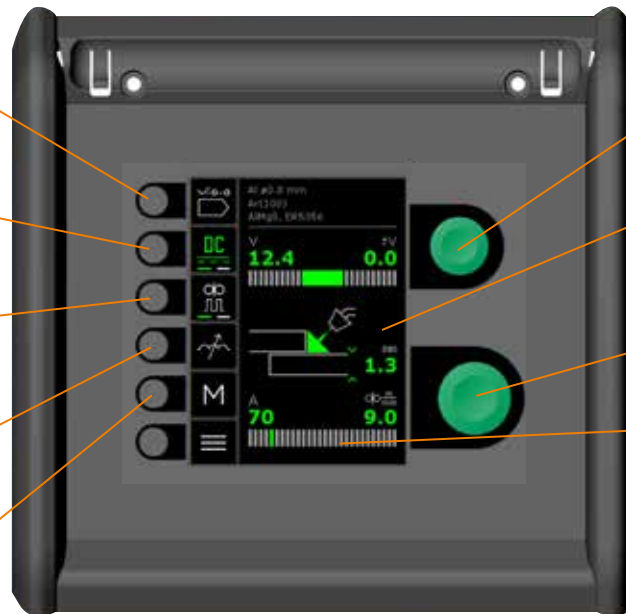
**SELECT PROGRAM**  
Enter type of wire and gas; the program selector will find the right program.

**SELECT PROCESS**  
Choose between welding or brazing, with or without pulse.

**ACTIVATE FUNCTION**  
Choose between tack welding, step (weld/pause time in sequences) or double pulse.

**ARC ADJUST**  
A function for precision adjustment between soft and hard arc.

**MEMORY FUNCTION**  
Save up to five favourite settings by the push of a button.



**FINE-ADJUSTMENT**  
Set the arc length.

**SUPPLEMENTARY INFORMATION**  
See description of the chosen job/program.

**MAIN PARAMETERS**  
Set amperage, wire feed speed and plate thickness.

**CURRENT DISPLAY**  
Short arc, globular transfer arc and spray arc.

*Soft-key control panel with colour display and intuitive icon-based menu.*

### DESIGNED FOR WELDING AND MIG BRAZING IN THE AUTO BUSINESS

The Automic 300 Pulse is a compact, fully digital welding machine with 36 pre-set programs. The programs meet the requirements for welding and brazing for example high-tensile steel and aluminium, which are used by the auto business. Perfect for joining sheet metals and building up car bodies.

### EASY SWITCH-OVER WITH DUO OR TRIO

The Automic 300 Pulse is available in three versions: SINGLE, DUO and TRIO. The DUO version has room for two 15 kg wire coils and the TRIO version for three 5 kg wire coils, providing easy switch-over between operations without change of hose, wire, wire drive rolls and gas. The machine will automatically establish which torch/wire feed unit is active.

### MIG BRAZING

In addition to sheet metal welding, the Automic 300 Pulse features MIG brazing with and without pulse of galvanised

steel plates. This function ensures maintenance of the materials in terms of corrosion and strength and reduces post-treatment of distortion of plates and profiles to a minimum. The result is cost-effective and efficient welding.

### DOUBLE PULSE FOR WELDING AND BRAZING

Automic 300 Pulse features double pulse – a function required by several carmakers. Double pulse ensures precise control of the arc and minimises weld spatter.

### BOOST FOR ALL MAINS MAINS VOLTAGES

The Automic 300 Pulse is available with built-in Boost Converter (electronic auto

transformer) for welding on all mono-phase and three-phase mains voltages from 208V to 440V (50/60 Hz).

### MIG-A TWIST®

The ergonomic MIG-A Twist® torch has a turnable swan neck for easy access to hard-to-reach locations.

MIG-A Twist® is available in different lengths and with different swan necks. It is configurable with different control units for adjustment of welding current at the torch handle. The control unit is easy to exchange as required – without the use of tools.



*MIG-A Twist® torch – illustrated with a control unit, which is optionally available.*

# APPROVED BY THE BEST WHAT MORE COULD YOU POSSIBLY WANT?

## IGC® - FOR OPTIMAL SHIELDING OF WELD POOL

IGC® (Intelligent Gas Control) ensures optimal shielding of the weld pool and maintains the strength in the joint in the best way possible. The result is large-scale gas savings and a minimum of weld spatter. IGC® is a synergic gas regulation monitoring the consumption automatically. IGC® is available as optional equipment.



## FOUR-ROLL WIRE FEED SYSTEM FOR STABLE WIRE FEEDING

The Automig 300 Pulse is equipped with four-roll wire feed system in the wire feed unit and Tacho control of wire motor for ultra precise wire feeding.

## LIGHT IN THE WIRE CONSOLE

The Automig 300 Pulse is equipped with LED light in the wire console for easy change of wire and wire rolls in low light environment.



Migatronic.com offers free software update via SD card.

Automig 300 Pulse is available in SINGLE, DUO and TRIO versions.



# AUTOMIG 300 PULSE - LOTS OF OPTIONALLY AVAILABLE EQUIPMENT

## OPTIONALLY AVAILABLE EQUIPMENT

- Wide range of torches/swan necks
- Control unit for torch handle
- Torch holder
- Elevated torch holder for 3 torches
- Adapter for 5 kg wire spools
- Tool tray
- IGC® Intelligent Gas Control
- Calibration certificate
- MigaLOG software for data collection
- CEE plug



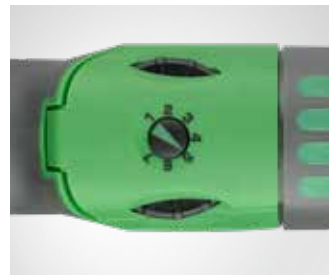
Device for easy coil-up of long cables.

Torch holder. Fitted as standard equipment as illustrated. Optionally available for fitting in the left hand side of the welding machine (item number 78861557)

Elevated torch holder for three torches (item number 70617031)

Control unit for adjustment of welding current at the torch handle (item number 80100402)

Miga Log™ for storage and display of welding data on an SD card; applicable for documentation of compliance with repair procedures.



We reserve the right to make changes.

AUTOMIG 300 PULSE	SINGLE // DUO // TRIO	BOOST SINGLE // BOOST DUO // BOOST TRIO			
Current range, A	15-300	15-200		15-300	
Mains voltage +/- 15%, (50-60Hz) V	3x400				
Mains voltage +/- 10%, (50-60Hz) V		380-440	208-380	380-440	208-380
Phases		1	1	3	3
Fuse, A	10/16	10/16/20	20	10/16/20	20
Minimum generator size, kVA	16	10	9	16	16
Duty cycle 100% /40°, A%/V	200 / 100 / 24.0	150/100/21.5		200/30/24.0	
Duty cycle 60% /40°, A%/V	230 / 60 / 25.5	160/60/22.0		210/60/24.5	
Duty cycle max. /40°, A%/V	300 / 20 / 29.0	200/30/24.0		300/20/29.0	
Open circuit voltage, V	50-60	50-60			
Protection class *)	IP 23S	IP 23S			
Norm	IEC60974-1. IEC60974-5. IEC60974-10 Cl. A	IEC60974-1. IEC60974-5. IEC60974-10 Cl. A			
Dimensions (H x W X L), mm	838x443x1003 // 1104x597x1003 // 1104x597x1003	838x443x1003 // 1104x597x1003 // 1104x597x1003			
Weight, kg	49 // 63 // 67	52 // 66 // 70			

For further data please refer to manual. \*) For outdoor use

